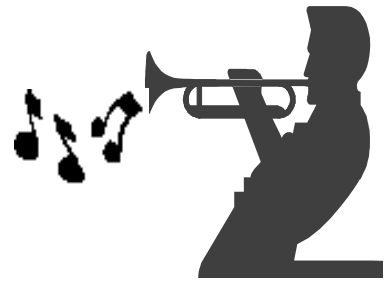


# Waverly Warriors

## Band Boosters News



September 2007

GO WARRIORS GO!

**Waverly Band Boosters**  
P. O. Box 80982  
Lansing, MI 48908-0982

### Board of Directors

**Dave Larzelere**  
High School Director  
323-3831  
larzele1@msu.edu

**Dave Gorbe**  
East & Middle School Director  
321-7240  
dagorb@sbcglobal.net

**Karen Shippy**  
President  
323-9704  
BoosterPrez@waverlyband.org

**Open**  
Vice President

**Jacklin Blodgett**  
Treasurer  
JBlodgett@WaverlyK12.net

**Karyn Koenigsknecht**  
Secretary  
323-1089  
k13normkaryn@aol.com

**Denise Sloan-Turner**  
High School Representative  
323-7643  
dsloan9@juno.com

**Open**  
Middle School Representative

**Open**  
Waverly East Representative

**Alan Wright**  
Newsletter, Web, & Publicity  
886-0594  
newsletter@waverlyband.org

## Greetings from the Band Directors

### Larzelere Welcome

It's hard to believe that summer break is quickly coming to an end. Hopefully, your summer has been relaxing, restful and most of all, memorable. The 2007 Waverly High School Marching Band Camp, which was held from July 29-August 4 at YMCA's Kimball Camp was a huge success. The 115 member Warrior Marching Band is off to great start with their 2007 show, *Pirates of the Caribbean*. A special thanks to Cathy and Dave Pike for helping organize this year's camp and to all the parents that gave up their time to help chaperone and supervise our students. The tradition of traveling to Camp Kimball for Waverly could not continue without these dedicated and generous parents.

As usual, the Waverly Bands are staying very busy with practice, rehearsal, and performance. With the first day of school right around the corner, please use this newsletter to get you prepared and up to date for our first few performances and fundraising opportunities.

If you are new to the Waverly Bands, this newsletter is intended to keep you informed on the latest news and events occurring within our organization. Please take the time to sit down as a family and go over all that it has to offer. Future newsletters will be available ONLY online at [www.waverlyband.org](http://www.waverlyband.org). If you are unable to get these newsletters online, let us know, as we are happy to mail one to you. (See article later in this newsletter)

I want to personally thank the crew of dedicated volunteers that fit 115 students into both concert uniforms and our new marching band uniforms in less than four hours, you are awesome! Your dedication is an inspiration to us all – Thank you.

A special thanks goes out to both our band camp chair, Cathy Pike and our uniform chair Kathy Nuss. These two volunteers put in countless hours of work this summer organizing and planning for our summer activities and the upcoming school year. Without their tireless efforts, this organization would not survive – Thank you both.

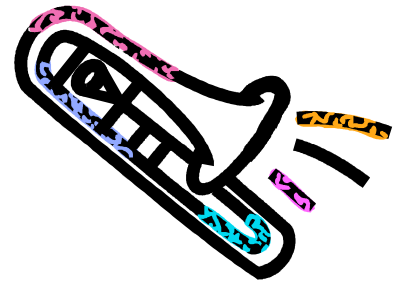
*(continued on next page)*



## Larzelere Welcome – Continued from Page 1

- **WEBSITE** – The new address is: [www.waverlyband.org](http://www.waverlyband.org) (**no s after band**) This new site is user friendly and contains the latest news with the Waverly Band Program, all the useful forms needed to participate in all bands, contact information, and the year's calendar. Please update your bookmark and visit this site a couple of times a week.
- **EMAIL ANNOUNCEMENTS** – For high school band members only. If you are not currently receiving these emails, please send a quick email to [larzele1@msu.edu](mailto:larzele1@msu.edu) to request being added to the list.
- **SYLLABUS/HANDBOOK** – All students enrolled in either high school band or middle school band received a band syllabus. Please make sure that you read through this syllabus with your student and return the contract to the appropriate teacher by the printed deadline.

David J. Larzelere  
High School Band Director



## Gorbe's Corner

Guess what. Summer's almost over. I can hear the screams of "NO!" from the kids (and teachers) and the sighs of "finally" from the parents. With the impending new beginning, we thought it helpful to parents to let them know ahead of time what will be needed in terms of equipment and books for the year.

Please make sure your student's instrument is in good working order before school starts. I know some of them haven't been touched since school let out (a higher number than I want to admit) so there are probably some stuck valves and leaky keys out there that will make getting back into playing frustrating for some students. Also, be sure that they have all the necessary maintenance materials, such as valve oil, slide cream, extra reeds, and cleaning supplies. This will make later repairs much less frequent.

When buying reeds, be sure that the hardness is appropriate for the age of the player. A beginner (5<sup>th</sup> and 6<sup>th</sup> grade) will be using a 2 ½ or so (medium soft) while more experienced players should be on a 3 or 3 ½ (medium). Avoid 2 or 1 ½ since these are too soft and will not produce good tone.

**Percussionists** should have their own sticks and mallets. First year percussionists, no matter what grade, will be playing bells for the whole year, and should have their own bell set. A complete percussion beginning set, that also includes a stand and a snare drum practice pad with all appropriate sticks and mallets, can be rented or purchased at most of the musical instrument dealers in the area. Once students have played bells for a year, they then will need a set of their own sticks and mallets and a stick bag. The snare sticks should be SD1 or SD2 Generals, and bell mallets can be medium hardness of any type. Middle school students also need a pair of timpani mallets (felt head, nothing expensive please) and a set of yarn mallets for other purposes. Marshall Music sells a stick bag complete with all the necessary sticks (Vic Firth EP2) for \$75.90. I have also seen them online for less at places like [musiciansfriend.com](http://musiciansfriend.com) and [music123.com](http://music123.com).

*(Continued on next page)*

## Gorbe's Corner – continued from page 2

**All 5-8 students** will again be using **workbooks** this year. Parents will be responsible for providing these. They are available at Marshall Music as well as online from numerous sources for \$3.95 (or less on Amazon.com). 5<sup>th</sup> and 6<sup>th</sup> graders will use Master Theory Book 1: Beginning Theory Lessons 1-30 and 7<sup>th</sup> graders will use Master Theory Book 2: Intermediate Theory Lessons 31-60. 8<sup>th</sup> graders finished book 2 last year, but will not start book 3 until high school, so we'll just be doing other handouts this year that I will be providing (a benefit to being so good at the workbooks, good job 8<sup>th</sup> graders). Both books are by Charles S. Peters and Paul Yoder and are published by Neil A. Kjos Music Company.

**5<sup>TH</sup> and 6<sup>TH</sup> GRADE** method books will be **Do It!** Book One by James O. Froseth and Published by GIA Publications. The price on this is \$7.95, but does include a CD.

**7<sup>TH</sup> AND 8<sup>TH</sup> GRADE** method books will again be **Foundations For Superior Performance Warm-Ups & Technique for Band** by Richard Williams & Jeff King, published by Neil A. Kjos Music Company. This book will also be used in HS, so once you buy it for 7<sup>th</sup> or 8<sup>th</sup> grade; you will be set for a long time.

Also, please be sure to fill out the information sheets that we hand out at the beginning of the school year to be certain that we have an email address for everyone, so you can receive our booster newsletters in the future, as all of them will be electronic after this one. This will save us quite a bit of money in the future and enable a quicker communication with all of you. If email is not available to you, please see the article later in the newsletter concerning how to get one mailed to you.

I hope this helps prepare you for the school year. We are looking forward to another great year of music, and looking forward to having you with us!!

*David Gorbe,  
Waverly East and Middle School Band Director*

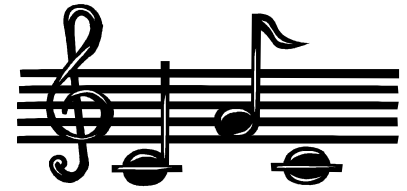


## Other Items of Interest

- **Meijer Rewards:** You can earn cash back for both your student's account and the Waverly band when you shop at Meijer and use a Meijer Credit Card or Guest Card. When filling out a form for a card, please use code # **944269**.
- **Private Lesson Reimbursement:** Parents need to attend at least one general booster meeting and participate in one fund-raiser in either the fall or spring to qualify. Ask your Band Director for more information. Reimbursements are made through the Waverly Activities Fund.
- **General Meeting:** The first general band board meeting is 7:00 p.m. on September 11<sup>th</sup>, in the High School band room.

## Notes from the Booster President

I am very excited to be the 2007-2008 Waverly Band Boosters President. Although, I must admit that filling the shoes of Randy and Patty Roost is a daunting task. Our former presidents did an exorbitant amount of work ensuring that the booster and band programs were successful. I would like to take this opportunity to convey my sincere thanks for all the hard work and time that Randy and Patty put into the program last year.



I have been a Waverly Band Mom for the past 8 years. During this time, I have come to understand that in order for this organization to work it MUST have the support of the students, families, school administration and community.

Over the past few years there has been a noticeable decline in our fundraiser participation. We are planning three fundraisers this year; MSU concessions, the apple pie sale and the cookie dough sale. Unfortunately, we will not be supporting the Christmas Tree lot due to the low sales over past two years. With only three fundraisers this year, it is imperative that our band families' support the fundraising activities by participating in the events (both in sales and volunteering).

The purpose of fundraising is not only to aid the individual student, but the program in general. The Waverly Band Booster general fund is used for such expenses as band equipment, music books, marching band camp, bus transportation, uniforms, and a host of other items that is crucial to the operation and continued success for our Waverly Bands. Therefore, I ask that all of our band families take time to review the volunteer activities that are posted on our website and participate in as many of these opportunities as possible.

In addition to participating in the fundraising activities, the Waverly Band Booster general meetings are a great way to get information and provide input. This year, we will be holding the meetings earlier in hopes of increasing parent attendance. The dates, times and meeting location will be posted on the website.

With your support we can ensure that all of our band programs will continue and will maintain the high standard of excellence that has been proudly displayed throughout the Waverly Community.

Sincerely,

*Karen Shippy,  
President, Waverly Band Boosters*

## GOT PICTURES?

Do you have pictures of a concert or other Band event you would be willing to share? We are looking to update and enhance the Sights and Sounds section of the band website. If you have pictures you'd be willing to share, drop an e-mail to [newsletter@waverlyband.org](mailto:newsletter@waverlyband.org)



## Waverly Band Boosters 2007-2008 Open Board Positions

An election for the officers for the 2007 – 2008 school year was held at the May 8<sup>th</sup> General Meeting. We have three open positions, and volunteering to serve as an officer is a great way to become more involved and support our fine young musicians.

The Waverly Band Boosters bylaws require an annual election of officers. All officer positions have a one year term, and each year all offices are open for election. You may vote for one (1) candidate in each office. Write in candidates are permitted, but only with the candidate's permission.

**The ballot for the open officer positions for the 2007-2008 Waverly Band Boosters is as follows:**

<b>Vice President:</b>		Jan Zanetti
		_____
<b>Middle School Representative:</b>		Anne Slocum
		_____
<b>Waverly East Representative</b>		Terri Raterink
		_____

Please take an active part in the decision-making for your organization and cast your ballot as follows:

Ballots may be mailed by September 7, 2007 to:

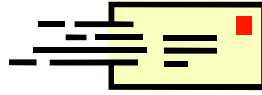
Waverly Band Boosters  
P.O. Box 80982  
Lansing, MI 48909-0982

Or better yet, you can bring your ballot to the general booster meeting, scheduled for 7 p.m. September 11, in the high school band room.

## Fundraising – Why we do it, Where does the Money Go, What's in It for My Child?

The Waverly Band Boosters run a variety of fundraisers throughout the year from our biggest event, Apple Pies, to the smaller fundraisers, like Meijer Rewards and Janies Cookie Dough. Why do we do it? As everyone knows, this year Waverly is having significant budget challenges. With pay-to-play sports, elimination of some programs, and restructuring of other programs, Booster support of the Band program is more important than ever. So, what do we pay for? Check out our budget at <http://www.waverlyband.org/Boosters/2007%20Budget.htm>.

East and Middle School parents will no doubt see that we have a lot more line items in the budget for the High School, and wonder why they should participate in fundraisers. First, hopefully your child will continue on in band all the way through their career at Waverly, but probably more important is that we also pay for all kinds of things for all the bands. For example, a lot of the "school owned" instruments are purchased and maintained by the Boosters (percussion instruments, large brass, specialty woodwinds, etc). We also buy supplies for the Directors, dry clean and replace uniforms, pay accompanists for Solo and Ensemble Festivals, pay Band Festival fees, purchase supplies such as reeds, extra books, percussion supplies, and music. And if that weren't enough, every fundraiser that you and your child participate in will deposit money into your student's private account. Money in the student account can be used for the Cedar Point trip in the Middle School, Band Camp Fees, and trip costs for the High School. There are a lot of expenses for High School band students; it really does pay to start building up your Student Account as early as possible. Want to know your child's account balance? Simply send an e-mail to [studentaccounts@waverlyband.org](mailto:studentaccounts@waverlyband.org)



## **This is the Last Newsletter to be Mailed – Web Newsletters are HERE!**

Producing the Waverly Bands Newsletter has gotten more expensive with the recent increase in postage rates. The Boosters want to keep all our band families informed, but at the same time, want to dedicate every cent we can to support the bands at all levels. Sadly, this is the last newsletter we will be mailing out. The good news is our website...

[www.waverlyband.org](http://www.waverlyband.org)

...has copies of all the past newsletters, as well as constantly updated calendar of events, all the forms sent out throughout the year, fundraising pages, meeting minutes, and our new "Sights and Sounds" pages featuring the bands in action. Moving to an electronic newsletter not only saves money but it will allow us to produce the newsletter more often. (Did you know that bulk mail can take up to three weeks for delivery?)

We know that checking in with the Band web page probably isn't on everyone's daily to-do list. If you have e-mail, we will notify you when the newsletter is published. Simply send a message to [newsletter@waverlybands.org](mailto:newsletter@waverlybands.org) and we will add you to our e-newsletter list!

If you have any suggestions for how we might improve the web site, please feel free to drop us an email at [newsletter@waverlyband.org](mailto:newsletter@waverlyband.org) or attend one of our band booster meetings and tell us what you think.

If you do not have internet access and would like to have the newsletter mailed, please mail a note to us at:

Waverly Band Boosters  
P.O. Box 80982  
Lansing, MI 48909-0982

Please include your name, mailing address, and child's name and grade.



The Middle School and High School Bands will be performing at Wavapalooza, on September 7. We hope to see you all there! For more information on Wavapalooza, see the district website at <http://web.waverly.k12.mi.us/Wavapalooza.htm>

## 2007 Waverly Marching Band Notes and Needs

### Home Games

August 24, September 7, October 5, October 12, and October 19. We need your help before and after the games. For what?



### NEW Uniforms

Thanks to an extremely generous donation from the Chapman family along with funds from the Band Boosters and the School District, the Waverly Warrior Marching Band took the field this year in brand new uniforms! Kathy Nuss has graciously agreed to serve as our uniform chair again this year, and her dedicated group of volunteers has already been hard at work fitting and altering uniforms. To keep our new uniforms in great condition, we will continue to store them in the Band Room. We need parent volunteers **before and after** all Marching Band performances to assist in checking out and checking in uniforms. If you can assist in this, please use the volunteer form later in this newsletter, or online at <http://www.waverlyband.org>.

**PARENTS:** Please do NOT slip your child some hot chocolate on a cold day – the warmth it provides for a few minutes is not worth the cost of a ruined uniform. We feed the students before every game, so skip the hot dogs too please.

### Football Food – no potlucks this year!

Good news! The boosters will be providing the pre-game food for the Marching Band this year. We built in a couple of extra dollars per student into the Band Camp fee's this year to cover the expense of buying food for the band on game days. **We still need your help to set up and clean up the serving area.** If you can help, please use the Volunteer Form (in this newsletter).

### Halftime Help

**Water Distribution:** Just before halftime and before the marching band performs, volunteers are needed to begin filling cups with water for the band members to drink after their halftime show.

*Want to help out? Fill out the volunteer form in this newsletter, or better yet, fill it out ONLINE at <http://www.waverlyband.org>*

## THANKS!!!

A big thank you to all who helped out to make band camp a reality for 115 band students. To our Sunday registration workers, Anne Epstein, Lori Peters, Karen Shippy, Jan Zanetti, and Denise Sloan, thank you for organizing all those papers so efficiently and making the process easy for everyone involved. To our day chaperones, Marcia Chapman, Laura Politi, Laurel Thompson, Shanta Ellsworth, Julie Marrison, The Dyers, Renee Patterson, Margaret Galihugh, KariLyn Halberg, thank you for the much needed relief that you supplied to us. To the overnight chaperones, Yogi Saxena, Jim Annis, Sean Kottke, Alan Wright, Mark Shippy, Dave Pike, Patty Roost, Patty Little, Beth D'Mello, Tonya Schelter, Karen Shippy, Denise Sloan, Jane Marshall, Betsy Gallup, Joanne Klein, Kathy Nuss, thank you and I sincerely hope that you have caught up on your sleep! Special thanks to Randy and Jonathon Roost for getting the trailer safely back and forth from camp – thank you for your cool heads and quick thinking that prevented a serious accident. I hope that I have included everyone that helped, if not, accept both my apologies and my thanks. Band camp cannot happen without the support of a lot of volunteers.

In addition to all of the parent volunteers, I'd like to add a HUGE thank you to all of the band students. I have been attending band camp for several years (let's not reflect on just how many!) and I can honestly say that this is the nicest group I have had the pleasure of chaperoning. The students were cooperative, hard working and just plain nice. Even the few problems we had were made easier to handle by this group. (As chaperones, we promise to bring your kids back to you in one piece, which sometimes meant we had to stop some of the "fun" since it wasn't worth the risk to any of these great kids.) I am so proud to claim association with such a fine group of young people. Thank you, Waverly Marching Band for such a fine experience.

*Cathy Pike, 2007 Band Camp Chair*

## Upcoming performances, rehearsals, and activities

August	8	Wednesday	6:00 – 9:00 PM	MB Rehearsal	WHS
	15	Wednesday	6:00 – 9:00 PM	MB Rehearsal	WHS
	22	Wednesday	6:00 – 9:00 PM	MB Rehearsal	WHS
	<b>24</b>	<b>Friday</b>	<b>4:00 – 10:00 PM</b>	<b>WHS vs. Everett</b>	<b>WHS</b>
	29	Wednesday	6:00 – 9:00 PM	MB Rehearsal	WHS
September	5	Wednesday	6:00 – 9:00 PM	MB Rehearsal	WHS
	7	Friday	4:00 – 10:00 PM	WHS vs. Owosso/Wavapalooza	WHS
	12	Wednesday	6:30 – 8:30 PM	MB Rehearsal	WHS
	19	Wednesday	6:30 – 8:30 PM	MB Rehearsal	WHS
	26	Wednesday	6:30 – 8:00 PM	MB Rehearsal	WHS
October	1	Monday	6:30 – 8:30 PM	MB Rehearsal	WHS
	3	<b>Wednesday</b>	<b>TBA</b>	<b>Grand Ledge Invitational</b>	<b>GLHS</b>
	<b>5</b>	<b>Friday</b>	<b>3:30 – 10:00 PM</b>	<b>WHS vs. AA Huron (Homecoming)</b>	<b>WHS</b>
	10	Wednesday	6:30 – 8:00 PM	MB Rehearsal	WHS
	<b>12</b>	<b>Friday</b>	<b>5:30 – 10:30 PM</b>	<b>Waverly vs. Sexton</b>	<b>WHS</b>
	17	Wednesday	6:30 – 8:30 PM	MB Rehearsal	WHS
<b>***</b>	<b>19</b>	<b>Friday</b>	<b>5:30 – 10:30 PM</b>	<b>Waverly vs. Portland***</b>	<b>WHS</b>
	<b>20</b>	<b>Saturday</b>	<b>TBA</b>	<b>MSBOA Marching Band Festival</b>	<b>TBA</b>
	27	Saturday	All Day	APPLE PIE DAY!	WHS
	<b>24</b>	<b>Wednesday</b>	<b>7:30 PM</b>	<b>MS Band Concert (with MBand)</b>	<b>WHS</b>

\*\*\* left off the previous calendar

## Waverly Band Booster General Membership Meetings

- September 11 – 7:00 pm
- February 12 – 7:00 pm
- May 13 – 7:00 pm



PLEASE NOTE: Booster meetings begin at 7:00 pm (earlier than last year). All Band Boosters General Membership Meetings are held in the High School Band Room. **Please come share your thoughts and ideas to make the program even better for your child.** If you wish to participate in private lesson reimbursement through student accounts, a parent must attend at least one general meeting to qualify (along with participation in a fundraiser).

Check out the web site for updated calendar dates!

[www.waverlyband.org](http://www.waverlyband.org)



# Waverly Band Boosters 2007-08 Volunteer Opportunities

Name:	E-Mail Address:
Home Phone:	Alternate Phone:

Please mark each event that you can help with. You will be contacted to confirm the date, time and location prior to the event.

## Waverly Home Football Games

- August 24 WHS vs. Everett (arrive at 4:00)
- September 7 WHS vs. Owosso (4:00)
- October 5 WHS vs. Ann Arbor Huron (Homecoming) (3:30)
- October 12 WHS vs. Sexton (5:30)
- October 19 WHS vs. Portland (5:30)



## MSU Football Concession

- September 1 MSU vs. UAB
- September 8 MSU vs. Bowling Green
- September 15 MSU vs. Pittsburgh
- October 6 MSU vs. Northwestern
- October 13 MSU vs. Indiana
- November 3 MSU vs. Michigan
- November 17 MSU vs. Penn State



## Other Volunteer Opportunities

- October 3 Grand Ledge Invitational
- October 26 Apple Pie Set-up
- October 27 Apple Pie Day (3-4 Shifts)
- April 24-26 State Band Festival
- May 1-3 State Band Festival
- May 23-26 Band Trip (tentative)
- TBA Cookie Dough Fundraiser



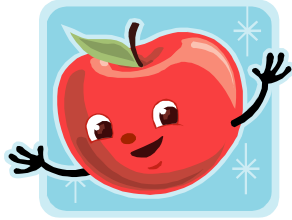
## Trailer Hauling

- October 3 Grand Ledge Invitational
- April 24-26 State Band Festival
- May 1-3 State Band Festival

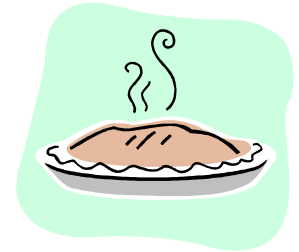


Please return this form to any Band Booster Board member or mail it to:

Waverly Band Boosters  
P.O. Box 80982  
Lansing, MI 48908-0982  
Or visit [www.waverlyband.org](http://www.waverlyband.org)



# 15<sup>th</sup> Annual Waverly Bands Apple Pie Fund Raiser



## Volunteers Needed!!!!

**Event Date: Saturday, October 27, 2007**

**Location: Waverly High School Cafeteria**

### Shifts:

6:00 a.m. – 10:00 a.m.	9:30 a.m. – 1:30 p.m.	1:00 a.m. – 5:00 p.m.	4:30 p.m. – 7:30 p.m.
---------------------------	--------------------------	--------------------------	--------------------------

**We also need help with set-up on  
Friday, October 26<sup>th</sup> from 5:00 p.m. – 8:00 p.m.**

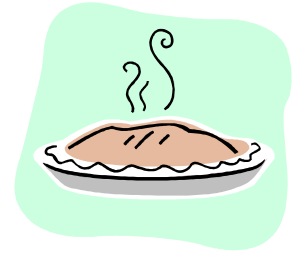
In 2006 over 1,500 pies were made. This is the Waverly Bands largest fundraiser. In order to make this event a success we need hundreds of volunteers. Please volunteer by completing the volunteer form located on the Waverly Band Booster website [www.waverlyband.org](http://www.waverlyband.org) or by contacting Karen Shippy at 323-9704 or e-mail [boosterpres@waverlyband.org](mailto:boosterpres@waverlyband.org). Volunteers will be contacted through e-mail or phone call to confirm shift and number of volunteers. Duties will be assigned on day of event.

We are developing new order forms this year which will be distributed to students the first week of school. **Sale date is September 10<sup>th</sup> through October 1<sup>st</sup>.**

**NOTE:** Any student selling apple pies **MUST** volunteer for at least one shift. Students in grades 5 & 6 must be accompanied by a parent.



# 15<sup>th</sup> Annual Waverly Bands Apple Pie Fund Raiser



**Sale dates: September 7 – October 1, 2007**

**Event Date: October 26<sup>th</sup> (set-up)**

**October 27<sup>th</sup> (pie day)**

**Location: Waverly High School Cafeteria**

In 2006 over 1,500 pies were made. In order to make this event a success we need hundreds of volunteers. Please volunteer by completing the form below and mailing to Waverly Band Boosters, P.O. Box 80982, Lansing, MI 48908 or you may complete a form on-line through [www.waverlyband.org](http://www.waverlyband.org). Please return forms by October 1<sup>st</sup>. Volunteers will be contacted through e-mail or phone call to confirm shift. Duties will be assigned on day of event.

**NOTE:** Any student selling apple pies **MUST** volunteer for at least one shift. Students in grades 5 & 6 must be accompanied by a parent.

## Volunteer Form

Student Name: \_\_\_\_\_

Grade: \_\_\_\_\_ Parent Name(s): \_\_\_\_\_

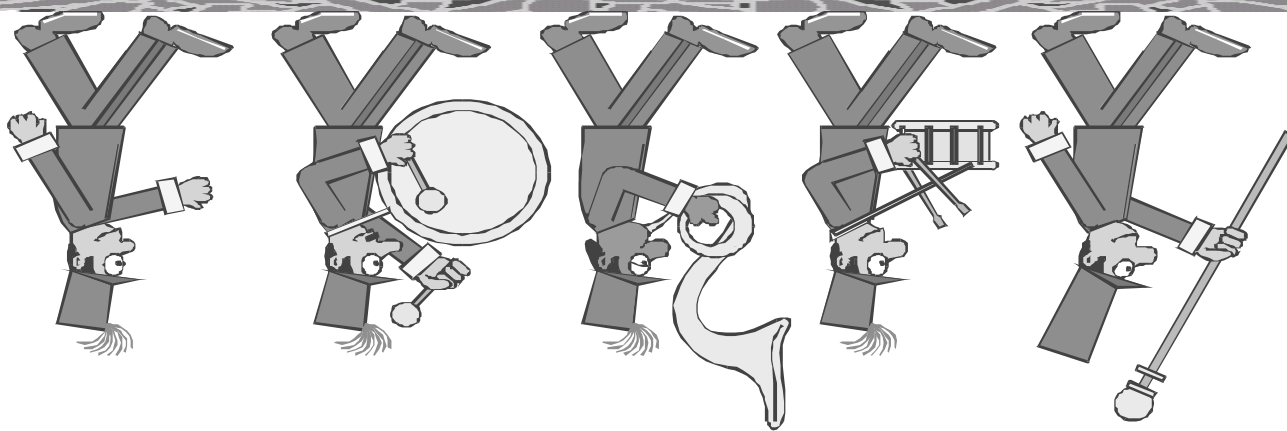
Phone Number: \_\_\_\_\_ E-mail Address: \_\_\_\_\_

<b>Volunteer Sign-Up for Friday, October 26, 2007</b>	
Set-up from 5-8 p.m.	
<b>Volunteer Names</b>	

<b>Volunteer Sign-Up for Saturday, October 27, 2007</b>				
Volunteer Names	Shift 1 6 – 10 am	Shift 2 9:30 – 1:30 pm	Shift 3 1 – 5 pm	Shift 4 4:30 – 7:30 pm

I can supervise a work station: Name: \_\_\_\_\_ Shift: \_\_\_\_\_

Please return completed form by October 1, 2007. Thank you!  
You can also sign up online at <http://www.waverlyband.org>



# NEWSLETTER

# WAVERLY BAND BOOSTERS

Waverly Band Boosters  
P. O. Box 80982  
Lansing, MI 48908-0982

U.S. Postage Paid  
Lansing, Michigan  
Permit No. 555  
Non-Profit Organization

Label